

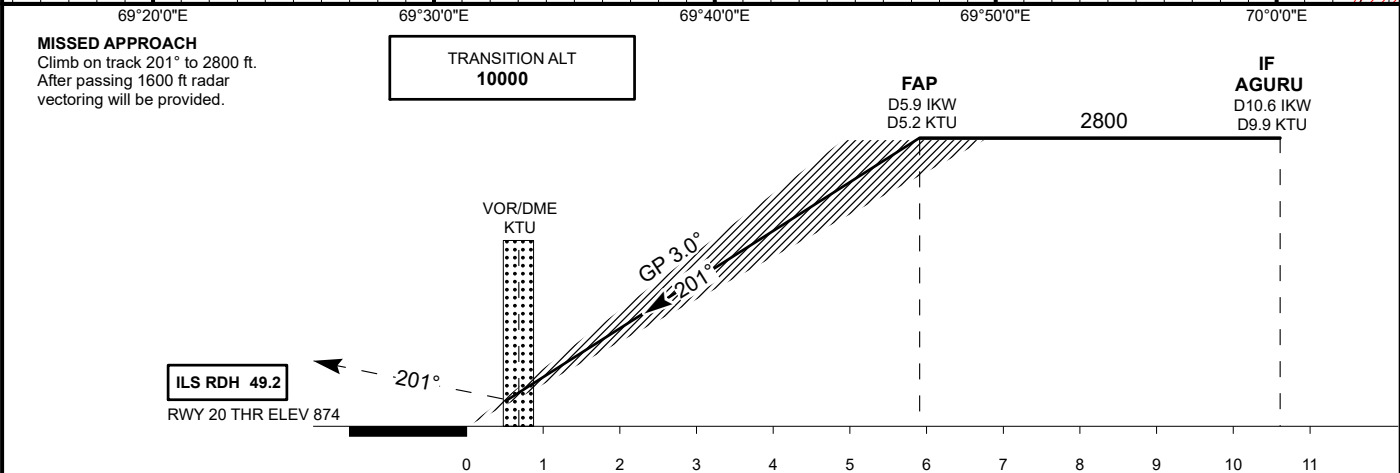
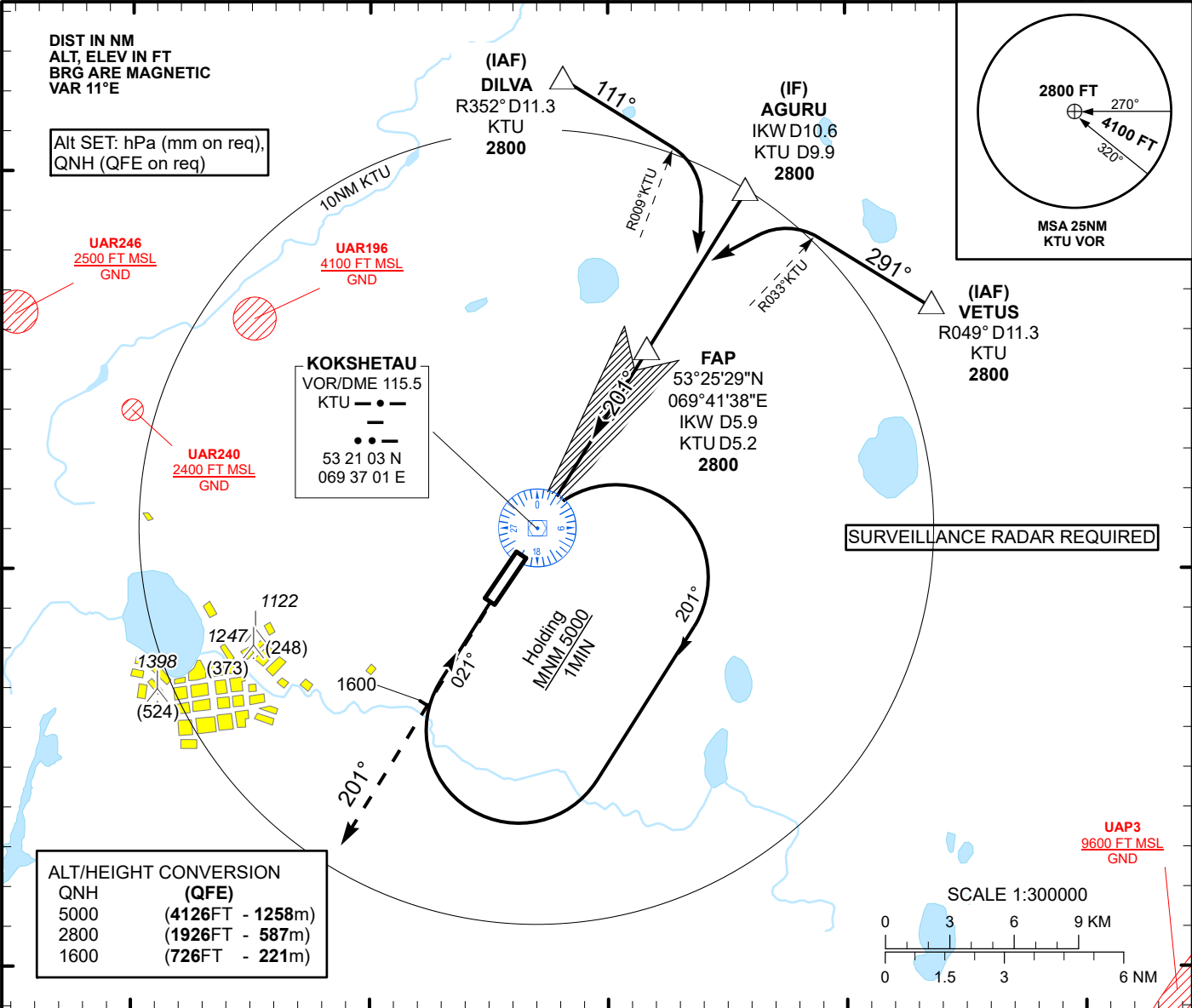
INSTRUMENT  
APPROACH  
CHART - ICAO

AERODROME ELEV 888 FT  
HEIGHTS RELATED TO  
THR RWY 20 ELEV 874 FT

ILS  
LLZ 109.5  
IKW 4.2  
GP 332.6  
CH 32X

KOKSHETAU TOWER 127.9  
KOKSHETAU ATIS (EN) 134.9  
KOKSHETAU ATIS (RU) 126.0

KOKSHETAU  
ILS/DME  
RWY 20



Aircraft Category		A	B	C	D	THR - DME IKW	5,9	5	4	3	2	1
Straight-in Approach OCA/H						DME KTU	5.2	4.3	3.3	2.3	1.3	0.3
	CAT I	1074(200)	1074(200)	1074(200)	1074(200)	ALTITUDE	2800	2537	2210	1886	1563	1242
						HEIGHT	(1926)	(1663)	(1336)	(1012)	(689)	(368)
DME IKW ZERO RANGED TO THR RWY 20												
Aerodrome Operating Minima DH ft x RVR(CMV)	CAT I					GS	Kt	80	100	120	140	160
						Rate of descent	ft/min	420	530	630	740	840
								180				950

KOKSHETAU  
ILS/DME

AERONAUTICAL DATA TABULATION

ILS approach to RWY 20 from AGURU, DILVA, VETUS	
Fix/point	Coordinates
KTU VOR/DME	53° 21' 02,7"N 069° 37' 01,1"E
IKW D5.9 KTU D5.2 (FAP)	53° 25' 29,1"N 069° 41' 38,1"E
AGURU (IF) KTU D9.9 IKW D10.6	53° 29' 28,2"N 069° 45' 47,7"E
DILVA (IAF) R352° D11.3KTU	53° 32' 19,2"N 069° 38' 06,7"E
VETUS (IAF) R049° D11.3KTU	53° 26' 37,7"N 069° 53' 28,5"E
THR RWY 20	53° 20' 28.22"N 069° 36' 25.39"E
IKW LOC	53° 18' 41.4"N 069° 34' 34.9"E